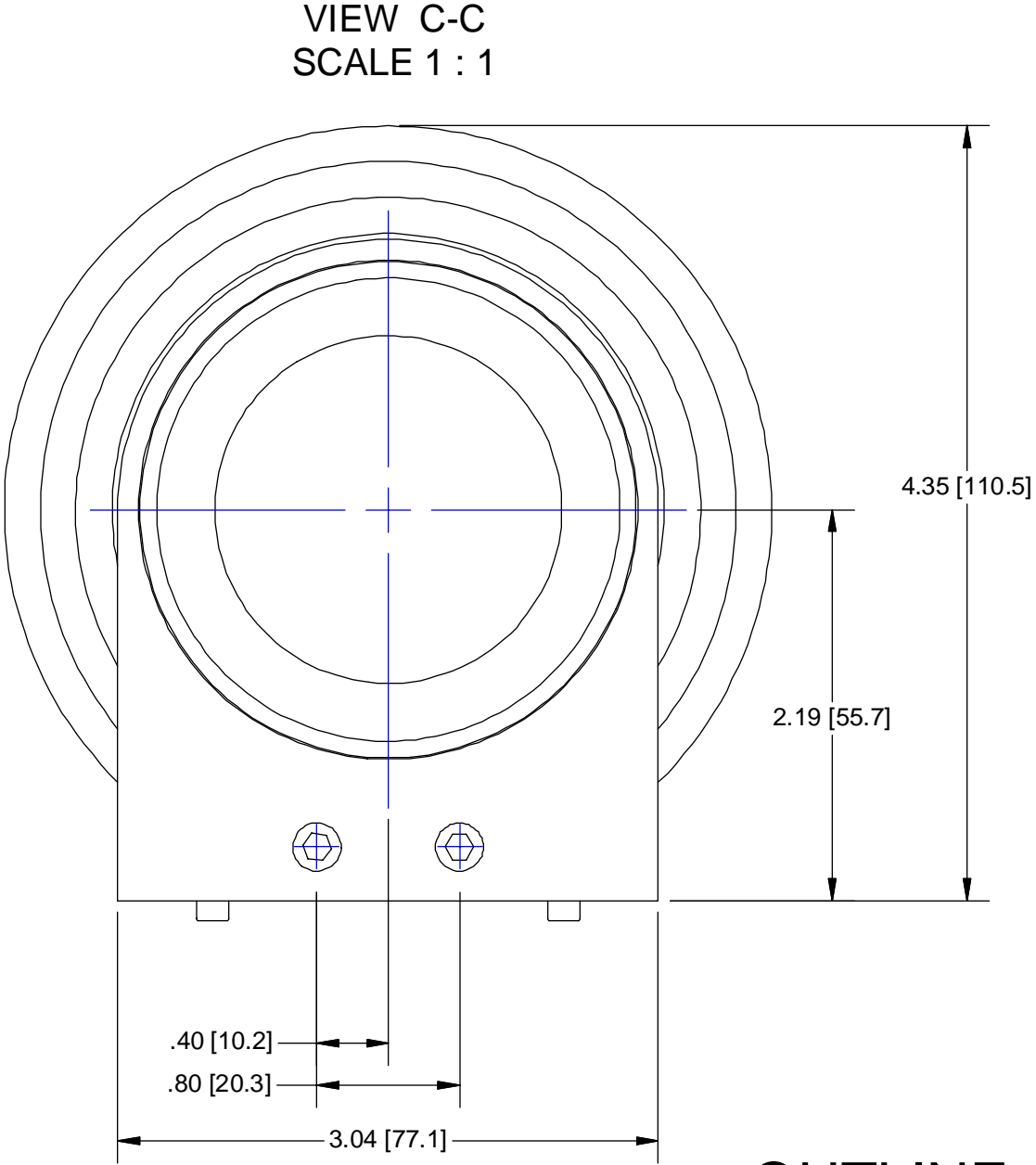
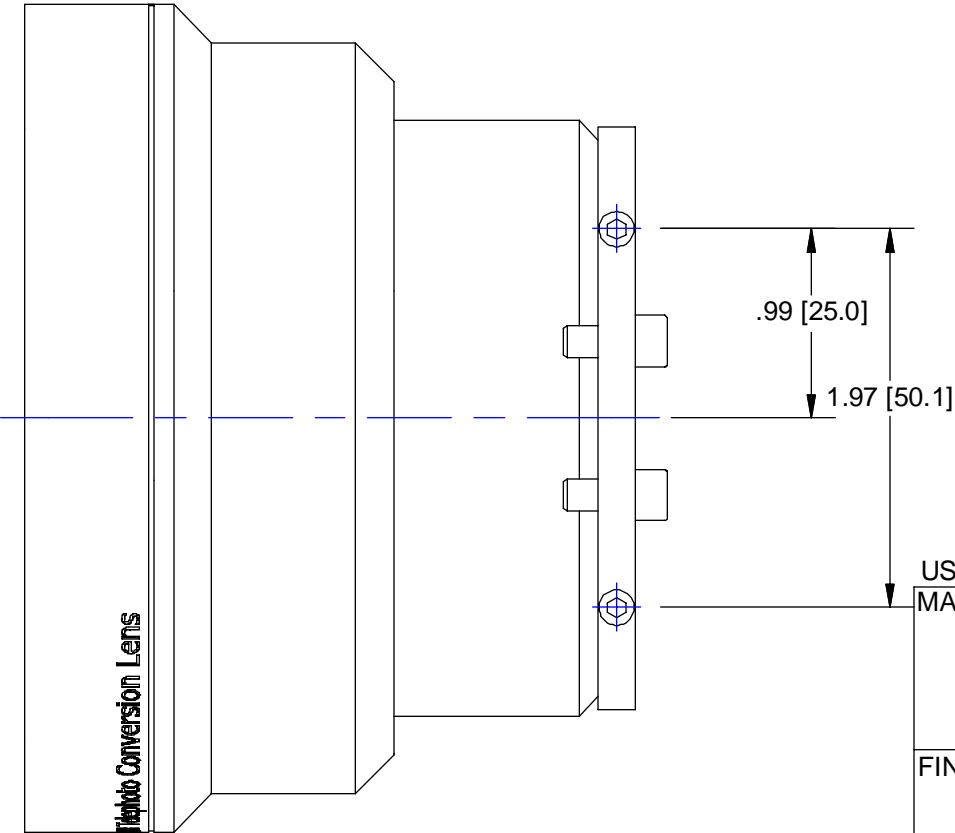
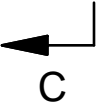

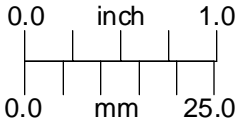
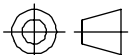


WEIGHT - 1.298 LBMASS



OUTLINE

USED ON:		P/N SUFFIX DEFINITION		THE CONTENTS OF THIS DOCUMENT ARE PROPRIETARY TO NAVITAR, ITS USE IS AUTHORIZED ONLY FOR RESPONDING TO REQUEST FOR QUOTATION OR PERFORMANCE OF WORK FOR NAVITAR		 ROCHESTER, NEW YORK		
MATERIAL:		UNLESS OTHERWISE SPECIFIED DIMENSIONS ARE IN INCHES AND INCLUDE CHEMICALLY APPLIED OR PLATED FINISHES		-1 CONVERSION COATING -2 PAINTING -3 MARKING -R REWORK				
FINISH:		TOLERANCES AS FOLLOWS		SCALE: 1:1				
		DEC. .XXX ± .005 DEC. .XX ± .010 FRACT. ± 1/64 ANGLES ± 30' CONCENTRICITY .003 TIR		DR: R. PODLENA				
		BREAK ALL SHARP EDGES .005 MIN. .010 MAX.		CH: P. BONAFEDE				
CHAMFER ALL THREADS 30° TO ROOT DIAMETER		MAX. SURF. ROUGHNESS: 32		APP:			SIZE B	
				DATE DR: 11/26/2003				
				DO NOT SCALE DRAWING		SCREENSTAR 1.20X TELEPHOTO ADAPTER		
						1-16303		
						SHEET 2 OF 2		
						REV C		