

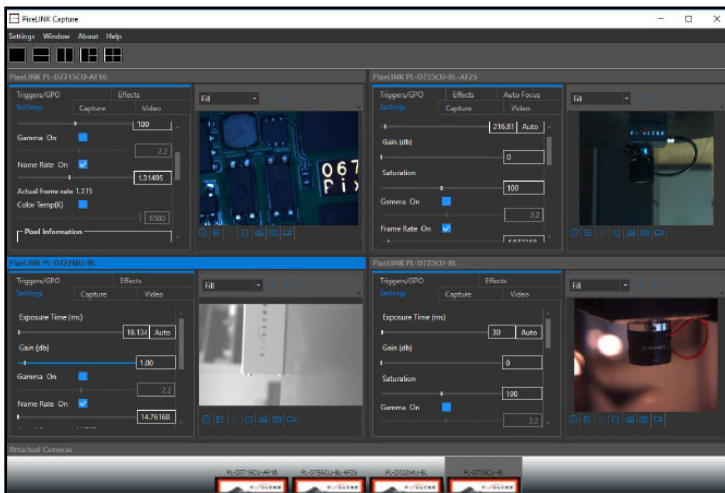
Pixelink Capture

for Windows

POWERFUL MULTI-CAMERA IMAGE CAPTURE SOFTWARE

Pixelink Capture is a real-time, interactive, multi-camera software application compatible with all Pixelink PL-D cameras. With a built-in autofocus feature, Pixelink Capture offers tremendous flexibility and power allowing the ability to configure and test multi-camera vision applications.

The multi-window environment includes a preview window, a configuration window, and a real-time graphical histogram. Users have the ability to adjust image size, color and exposure interactively through an easy-to-use control interface prior to image or video clip capture. The camera begins streaming at the point the application is launched.



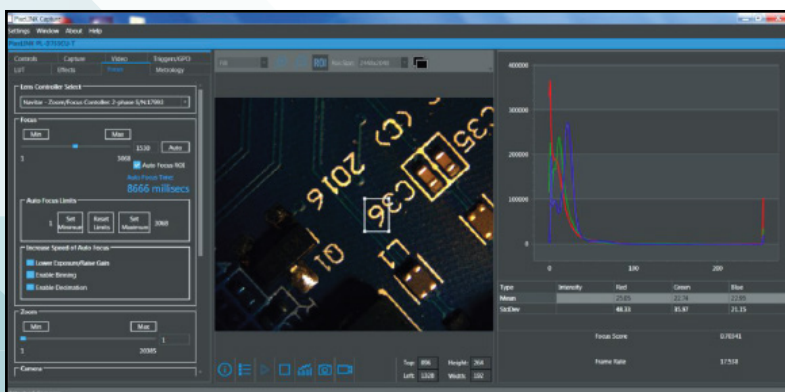
Four Camera Layout

Important Features

- Real-time video streaming
- Built-in autofocus application
- Resizable region of interest (ROI)
- Customizable multi-camera layout
- Image and video capture
- Trigger and GPO controls
- Supports Windows 7 and above

Enhanced Functionality

- Integrated lens control of zoom and focus for Navitar motorized lenses
- Accurate autofocus option for Navitar fine focus mechanisms
- Advanced metrology tools for on screen measurement of length, area and pixel location



Integrated Lens Control of Focus and Zoom

